

SkyWatcher: Encoders Installation

This kit is suitable for SkyWatcher classic 6"-16" and Collapsible up to 16".

Please unpack all parts from the encoder kit. Make sure that your kit contains the following parts:.



Please note the encoder on the left is for the altitude.

Azimuth encoder installation

- The azimuth pivot bolt needs to be replaced with the supplied azimuth pivot bolt. Unscrew the existing azimuth pivot bolt and remove the rocker box (put away the bolt and the nut but keep the plastic bushing):



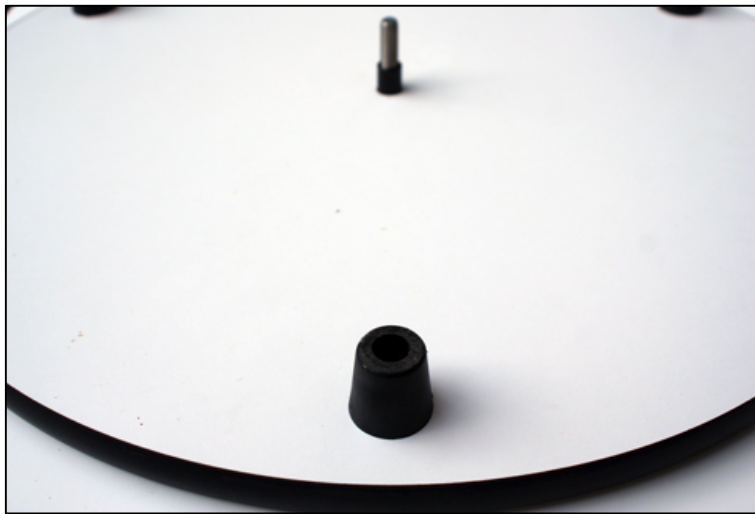
- Locate the new azimuth pivot bolt, insert it into the plastic bushing:



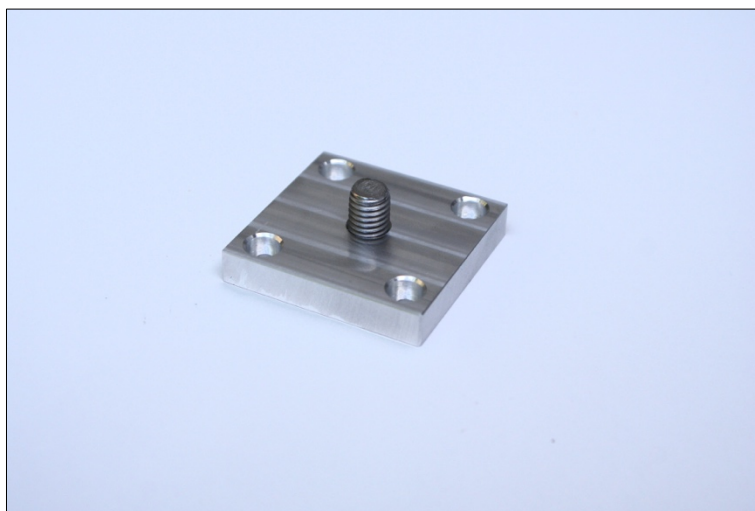
- Insert the bolt with the bushing into the hole in the ground board:



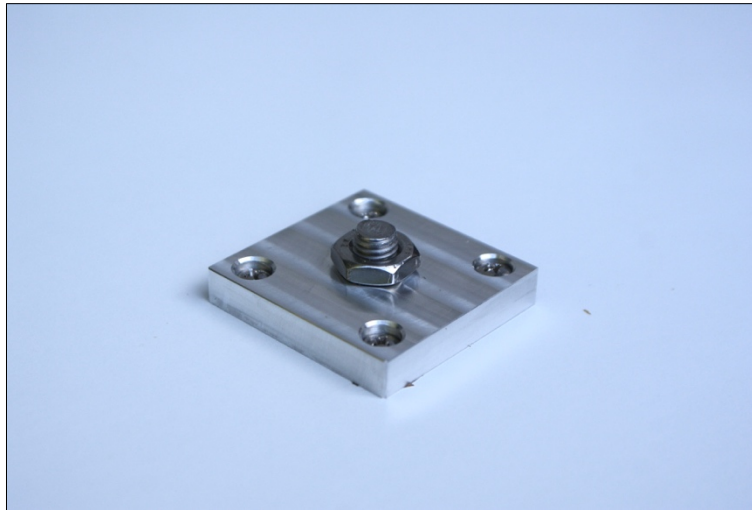
- Turn the ground board upside down while holding the bolt in place:



- Locate a square aluminium mounting plate
- Screw the mounting plate onto the bolt with the surface with concentric circles finish facing the ground board



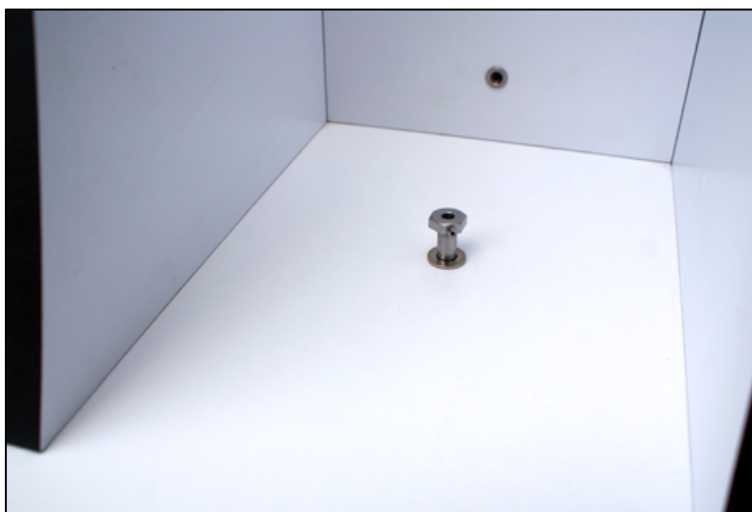
- Fix the mounting plate with the screws provided



- Unscrew the bolt, turn the ground around, insert the plastic bushing and a white plastic washer



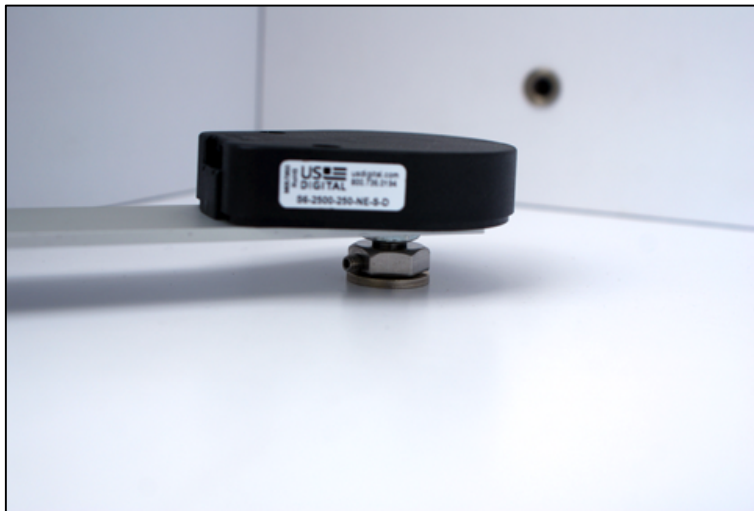
- Carefully put the rocker box on top of the ground board, insert the bolt with a metal washer and screw it tightly (but make sure that the rocker box can rotate):



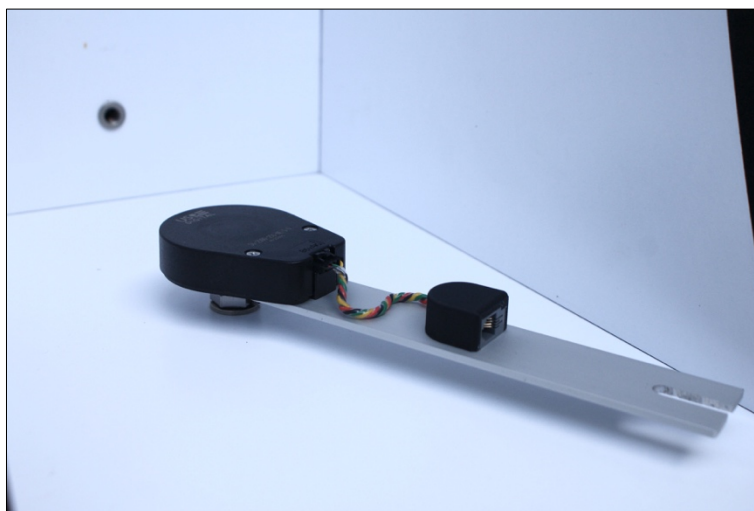
- Put the rocker box with the ground board on its side and fix the bolt with the nut provided:



- Position the rocker box with the ground board normally and insert the azimuth encoder's shaft into the hole in the pivot bolt:

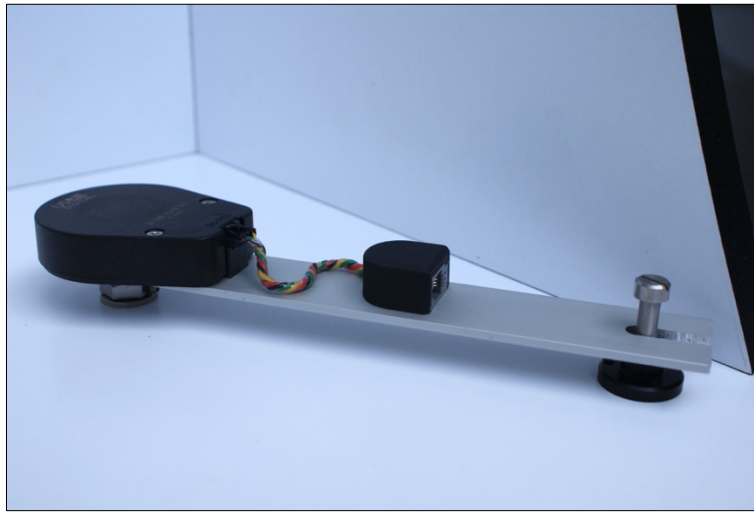


- Insert the anchor bolt into the slot on the encoder's arm, mark its place with a pencil:



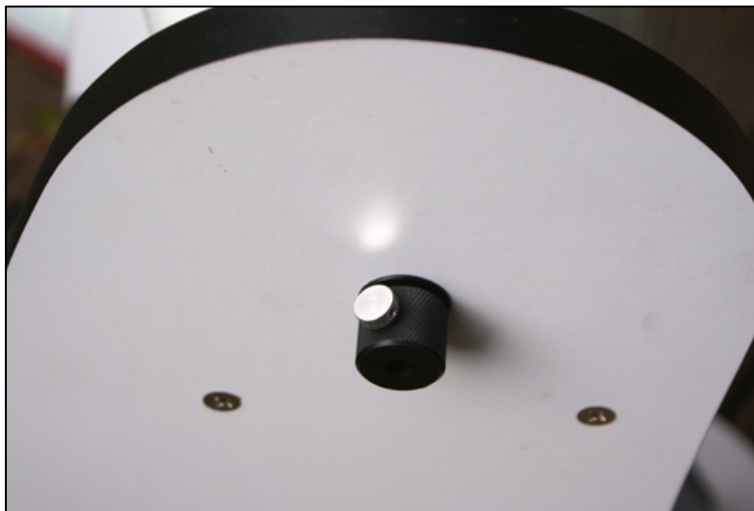
- Remove the encoder and fix the anchor bolt's foot with the screw provided:

- Put the encoder back on, tighten the grub screw (on the pivot bolt to hold the encoder shaft), install the cable tie and connect the encoder cable:

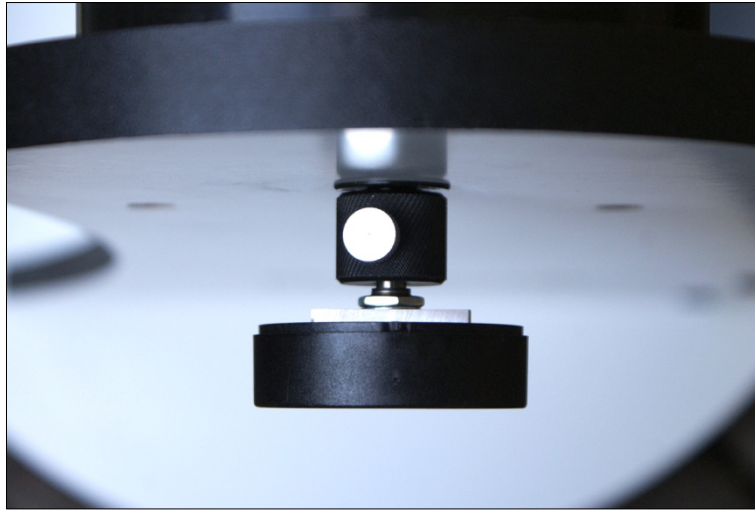


Altitude Encoder Installation

- The altitude encoder can be installed on either side of the rocker box. Remove the carry handle from (the one with the shorter thread and without the ball bearings). Screw the encoder shaft coupler provided in its place:



- Insert the Altitude encoder into the coupler:



- Insert the anchor bolt into the slot, position it like on the photo and mark its place with a pencil:



- Remove the encoder and fix the anchor bolt's foot with screws provided:



Put the encoder back on, tighten the thumb screw, connect the encoder cable:



Finished!